

- GPIO<0>
- GPIO<1>
- GPIO<2>
- GPIO<3>
- GPIO<4>
- GPIO<5>
- GPIO<6>
- GPIO<7>
- GPIO<8>
- GPIO<9>
- GPIO<10>

Femelle sur bottom

- SPI_SS_n
- SPI_SCK
- SPI_MISO
- SPI_MOSI

- GPIO<0>
- GPIO<1>
- GPIO<2>
- GPIO<3>
- GPIO<4>
- GPIO<5>
- GPIO<6>
- GPIO<7>
- GPIO<8>
- GPIO<9>
- GPIO<10>

SPDT
OS1201JM50N1
Fairchild 1201430

R1 0603
R2 0603
R3 0603
R4

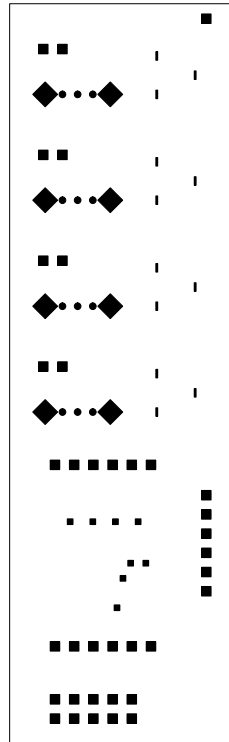
U1
ADC124S051C1MM1

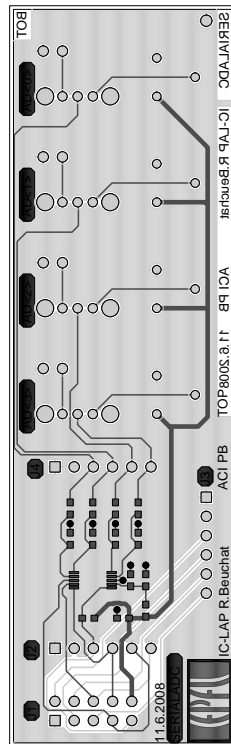
MLB_1600808_xxxxAX

SINGPIN

DRAWING	ENGINEER:
SERIALADC	RB
DATE:	PAGE: 1/1
Wed Jun 11 11:48:01 2008	acort cusser

DRILLCHART			
FIGURE	SIZE	PLATED	QTY
•	0.401	PLATED	8
◦	0.711	PLATED	12
◼	0.787	PLATED	12
◼	0.889	PLATED	37
◆	1.753	PLATED	8



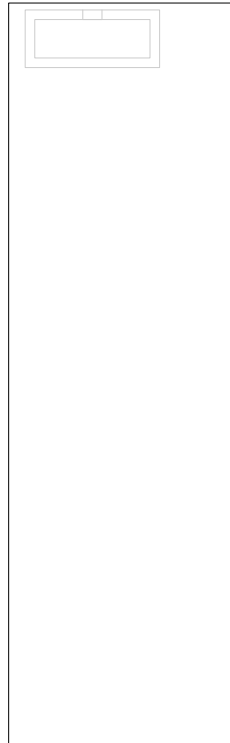


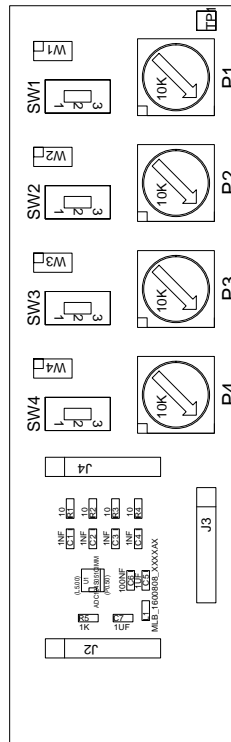
TITRE:SERIALADC

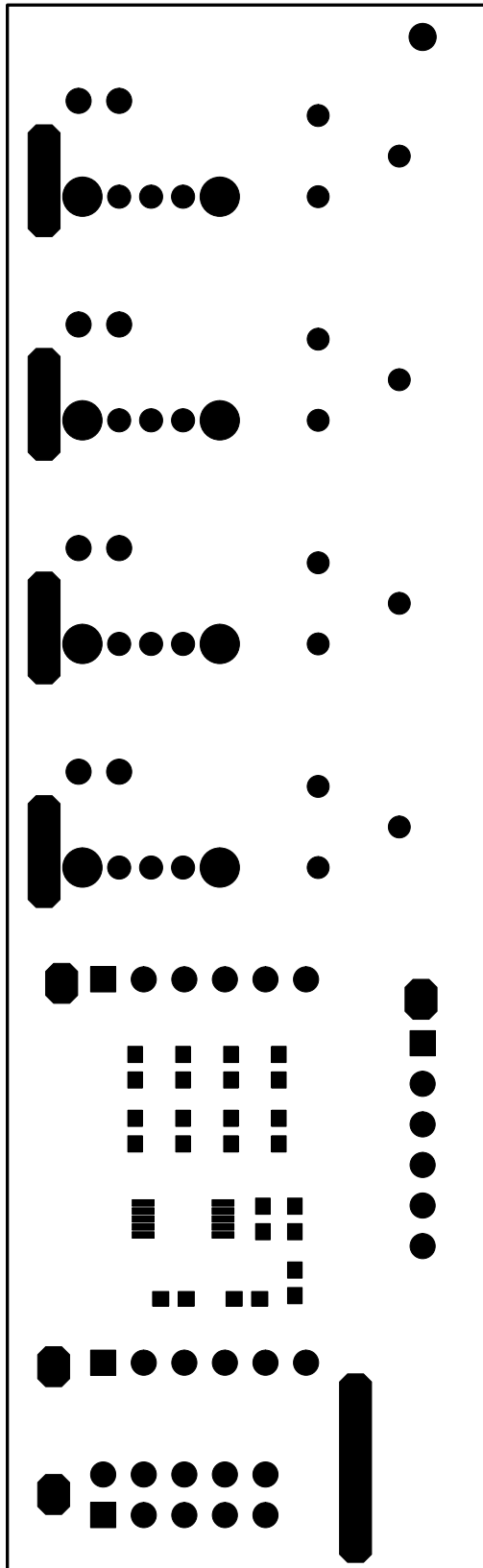
LABORATOIRE:IC-LAP
ENGINEER:R.Beuchat

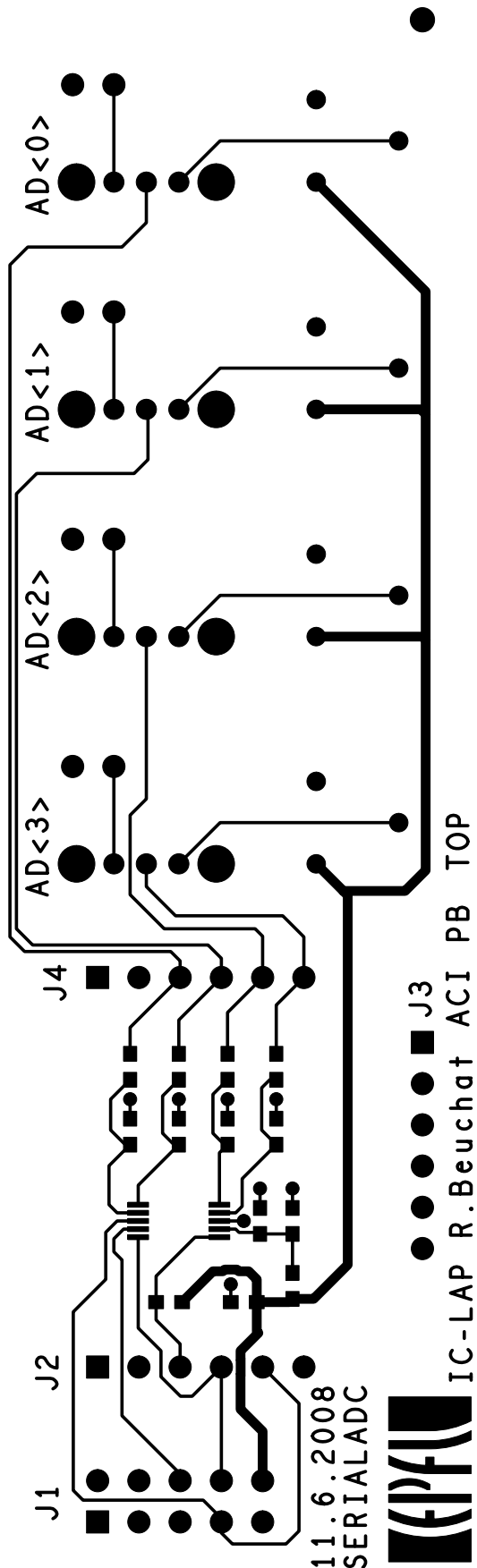
DATE:11.6.2008
EPFL-ACORT-PB

J1





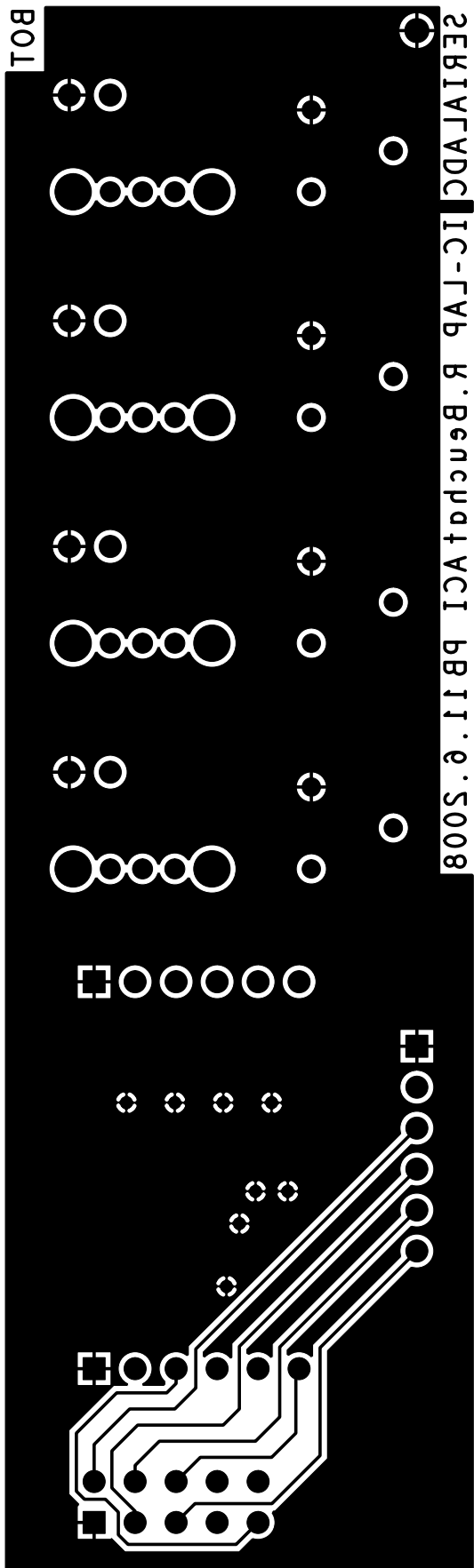


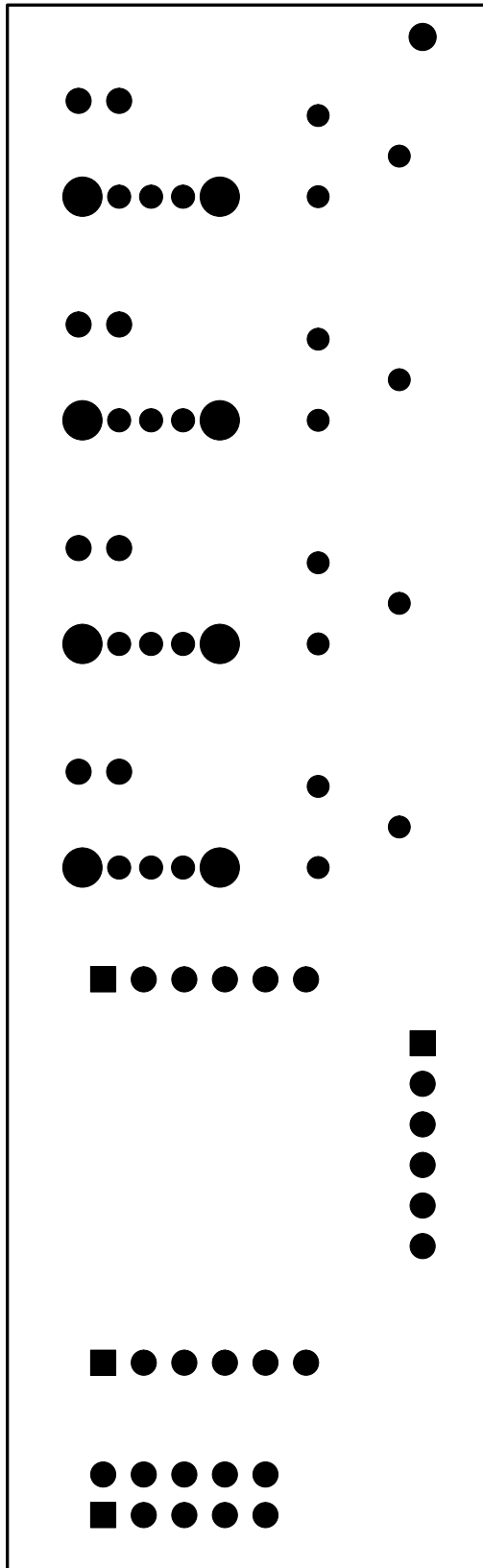


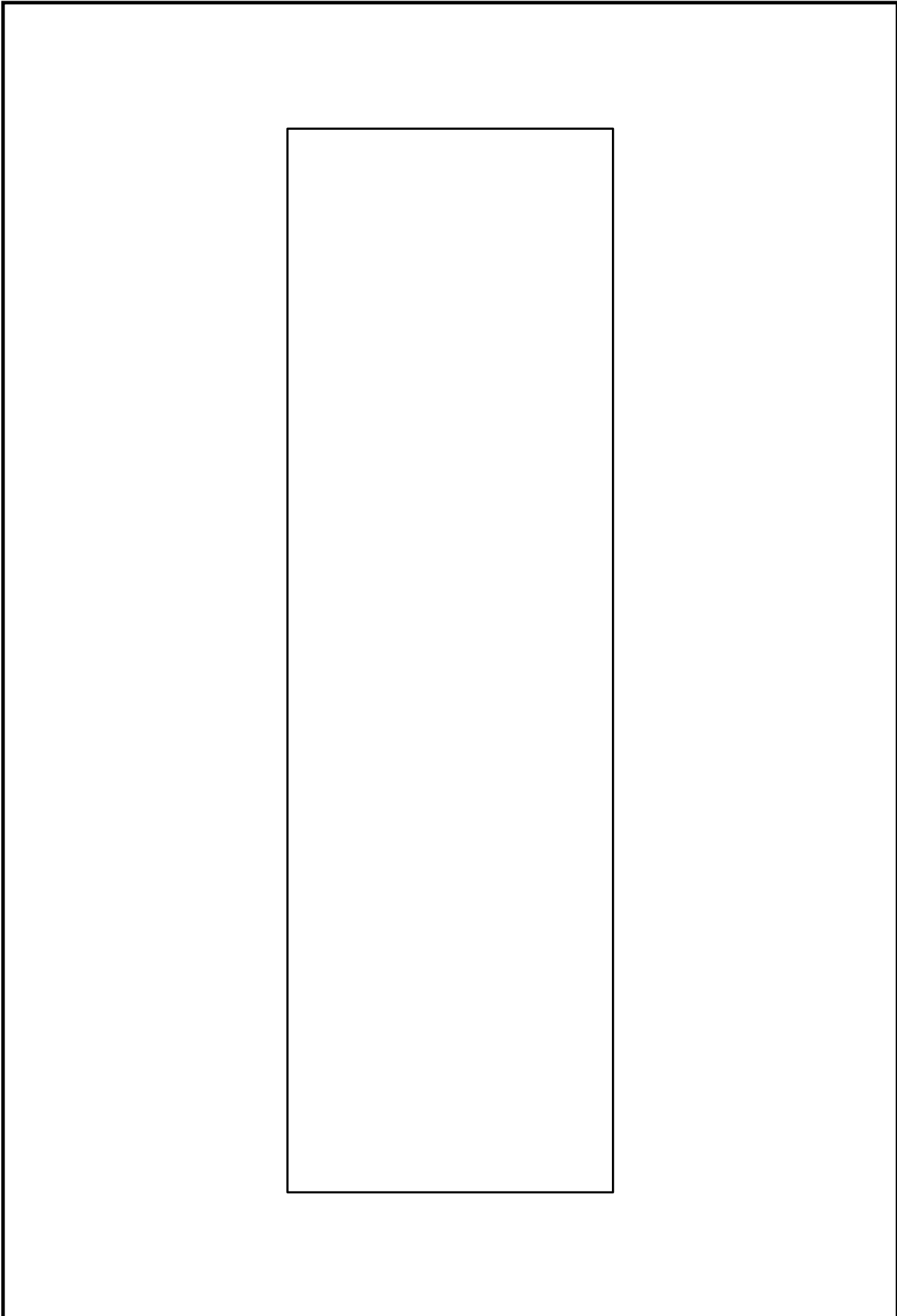
11.6.2008
SERIALADC



IC-LAP R.Beuchat ACI PB TOP







Component Report SERIALADC

serialadc_gloss

Wed Jun 11 13:46:15 MET DST 2008

Ref Des	Device Type	Value	Package Type	x	y	ang	Mir	Remark
C1	0603	1NF	0603	27.500	22.000	270.000	NO	
C2	0603	1NF	0603	27.500	19.000	270.000	NO	
C3	0603	1NF	0603	27.500	16.000	270.000	NO	
C4	0603	1NF	0603	27.500	13.000	270.000	NO	
C5	0603	1UF	0603	22.000	12.000	270.000	NO	
C6	0603	100NF	0603	22.000	14.000	270.000	NO	
C7	0603	1UF	0603	17.000	15.000	0.000	NO	
J1	CO10		CPFDCI10	6.000	24.000	90.000	YES	
J2	CO6		JUMP6	13.000	24.000	270.000	NO	
J3	CO6		JUMP6	33.000	4.000	180.000	NO	
J4	CO6		JUMP6	37.000	24.000	270.000	NO	
L1	BEAD	MLB_1600808_XX0603	0603	18.000	12.000	90.000	NO	
P1	P	10K	POH400_2	86.000	8.000	0.000	NO	
P2	P	10K	POH400_2	72.000	8.000	0.000	NO	
P3	P	10K	POH400_2	58.000	8.000	0.000	NO	
P4	P	10K	POH400_2	44.000	8.000	0.000	NO	
R1	R	10	0603	31.500	22.000	90.000	NO	
R2	R	10	0603	31.500	19.000	90.000	NO	
R3	R	10	0603	31.500	16.000	90.000	NO	
R4	R	10	0603	31.500	13.000	90.000	NO	
R5	R	1K	0603	17.000	19.600	0.000	NO	
SW1	SWCOM		SWGLIS_MINI2_OS	86.000	21.000	180.000	NO	
SW2	SWCOM		SWGLIS_MINI2_OS	72.000	21.000	180.000	NO	
SW3	SWCOM		SWGLIS_MINI2_OS	58.000	21.000	180.000	NO	
SW4	SWCOM		SWGLIS_MINI2_OS	44.000	21.000	180.000	NO	
TP1	TP		SINGPIN	96.000	4.000	0.000	NO	
U1	ADC124S051C1MM		SO10_05MM	22.000	19.000	90.000	NO	
W1	JUMP2		JUMP2	92.000	25.540	180.000	NO	
W2	JUMP2		JUMP2	78.000	25.540	180.000	NO	
W3	JUMP2		JUMP2	64.000	25.540	180.000	NO	
W4	JUMP2		JUMP2	50.000	25.540	180.000	NO	

Total Component count 31

BOM Report SERIALADC

serialadc_gloss

Wed Jun 11 13:46:15 MET DST 2008

Device	Package	Value	Nb	Reference Designators	Remark
0603-100NF	0603	100NF	1	C6	
0603-1NF	0603	1NF	4	C1 C2 C3 C4	
0603-1UF	0603	1UF	2	C5 C7	
ADC124S051C1MM	SO10_05MM		1	U1	
BEAD-0603-MLB_160080	0603	MLB_160080	1	XXXXXX	
CO10-CPFDCI10	CPFDCI10		1	J1	
CO6-JUMP6	JUMP6		3	J2 J3 J4	
JUMP2-0	JUMP2		4	W1 W2 W3 W4	
P-POH400_2-10K	POH400_2	10K	4	P1 P2 P3 P4	
R-0603-10	0603	10	4	R1 R2 R3 R4	
R-0603-1K	0603	1K	1	R5	
SWCOM-SWGLIS_MINI2_O	SWGLIS_MINI2_OS		4	SW1 SW2 SW3 SW4	
TP-13	SINGPIN		1	TP1	

Total Component count 31

NC Pins Report SERIALADC

serialadc_gloss

Wed Jun 11 13:46:16 MET DST 2008

Ref Des	Device	Nb	Not Connected Pins	Remark
J2	CO6-JUMP6	1	2	
J3	CO6-JUMP6	1	2	
J4	CO6-JUMP6	1	2	

Total count 3

Power Pins Report SERIALADC

serialadc_gloss

Wed Jun 11 13:46:16 MET DST 2008

Ref Des	Device	Name	Power Pins	Remark
J1	CO10-CPFDCI10	GND	1	
		VCC	10	
J2	CO6-JUMP6	GND	1	
J3	CO6-JUMP6	GND	1	
J4	CO6-JUMP6	GND	1	
TP1	TP-13	GND	1 3	
U1	ADC124S051C1MM	VCCA	2	
W1	JUMP2-0	GND	1	
W2	JUMP2-0	GND	1	
W3	JUMP2-0	GND	1	
W4	JUMP2-0	GND	1	

Total count 10

