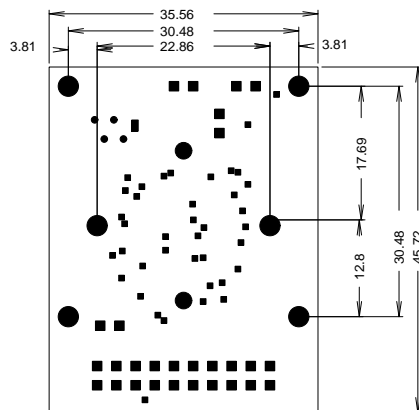


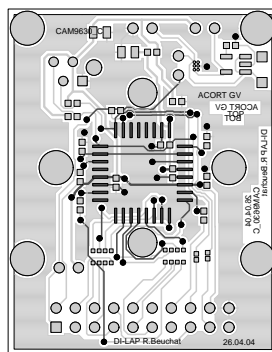
DRAWING CAM9630	rev b	ENGINEER: R. Beuchat
DATE: Fri Apr 23 11:14:20 2004		PAGE: 1/1 acort gv





DRILL CHART

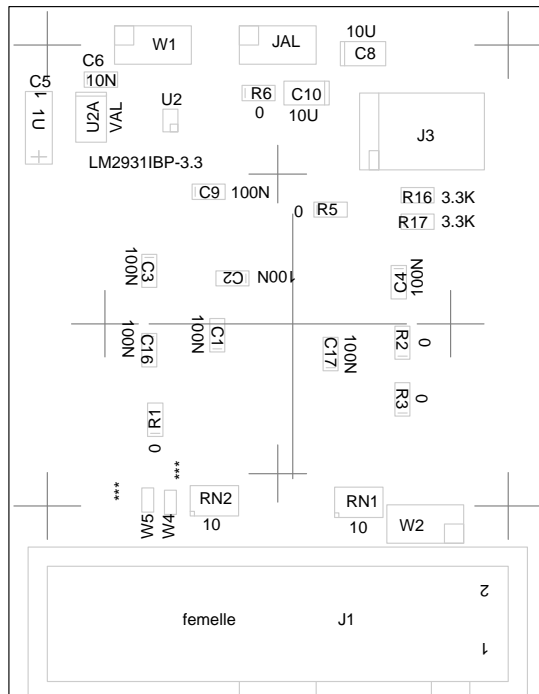
FIGURE	SIZE	PLATED	QTY
•	0.305	PLATED	39
●	0.787	PLATED	4
■	0.889	PLATED	28
■	1.499	PLATED	1
●	2.2	PLATED	2
●	2.7	PLATED	6

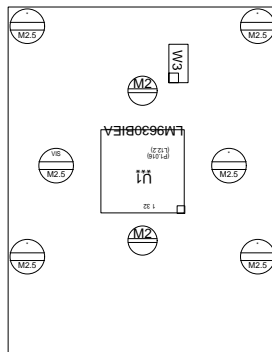


TITRE:CAM9630\_B

LABORATOIRE:DI-LAP  
ENGINEER:R.Beuchat

DATE:05.05.03  
EPFL-ACORT-GV

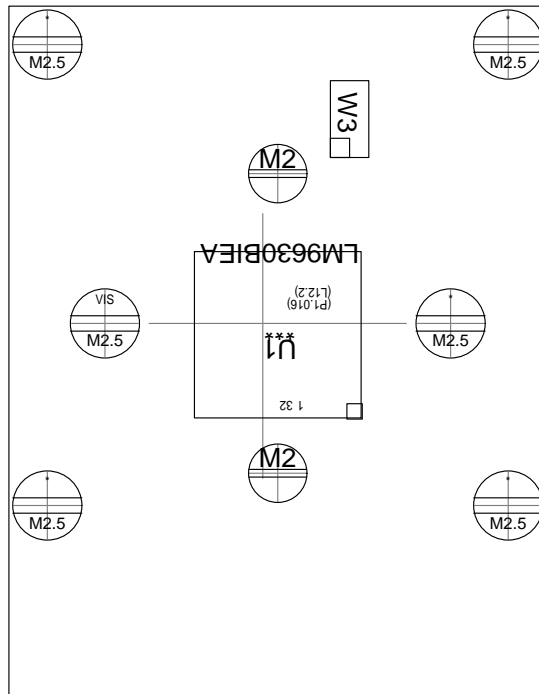




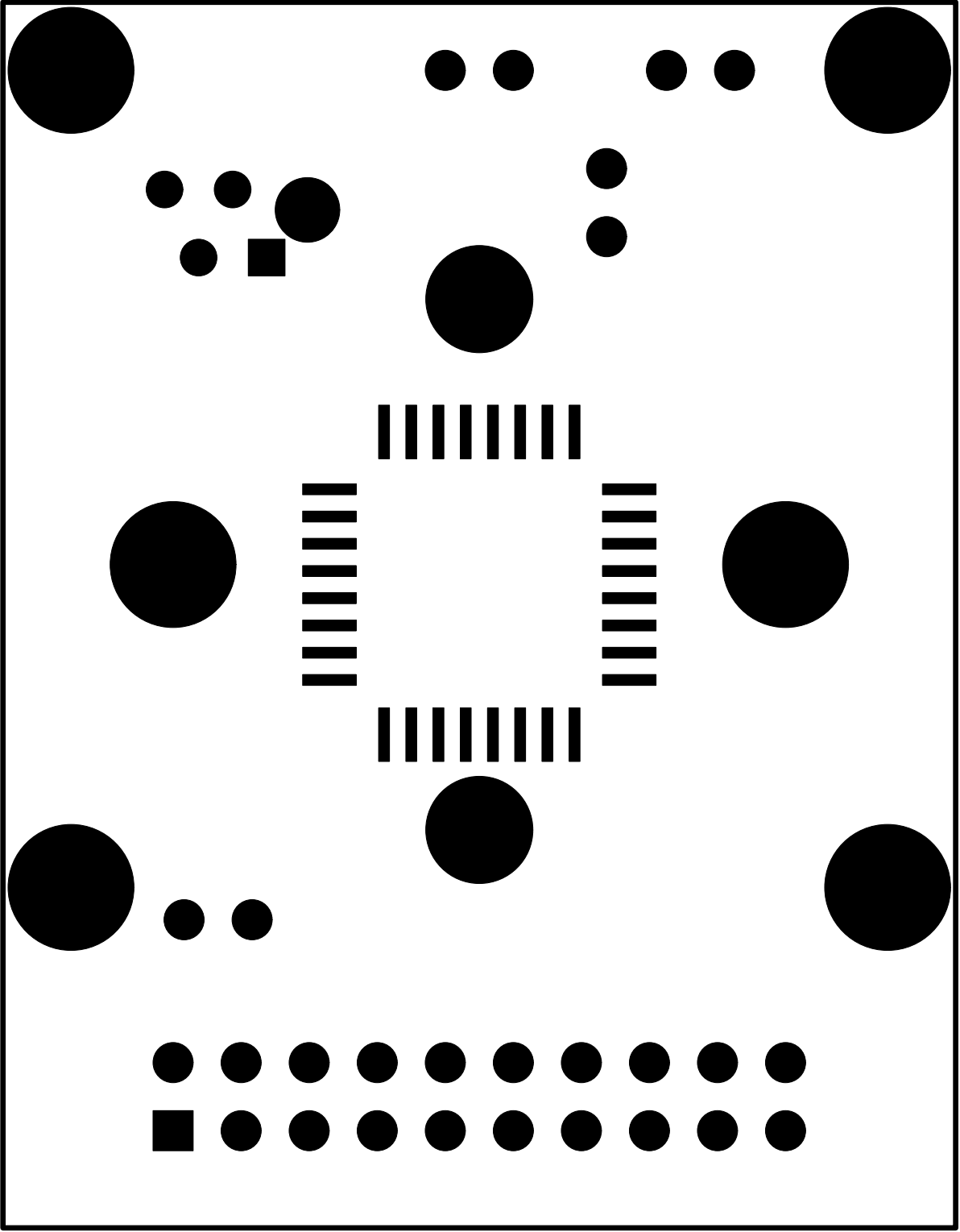
TITRE:CAM9630\_B

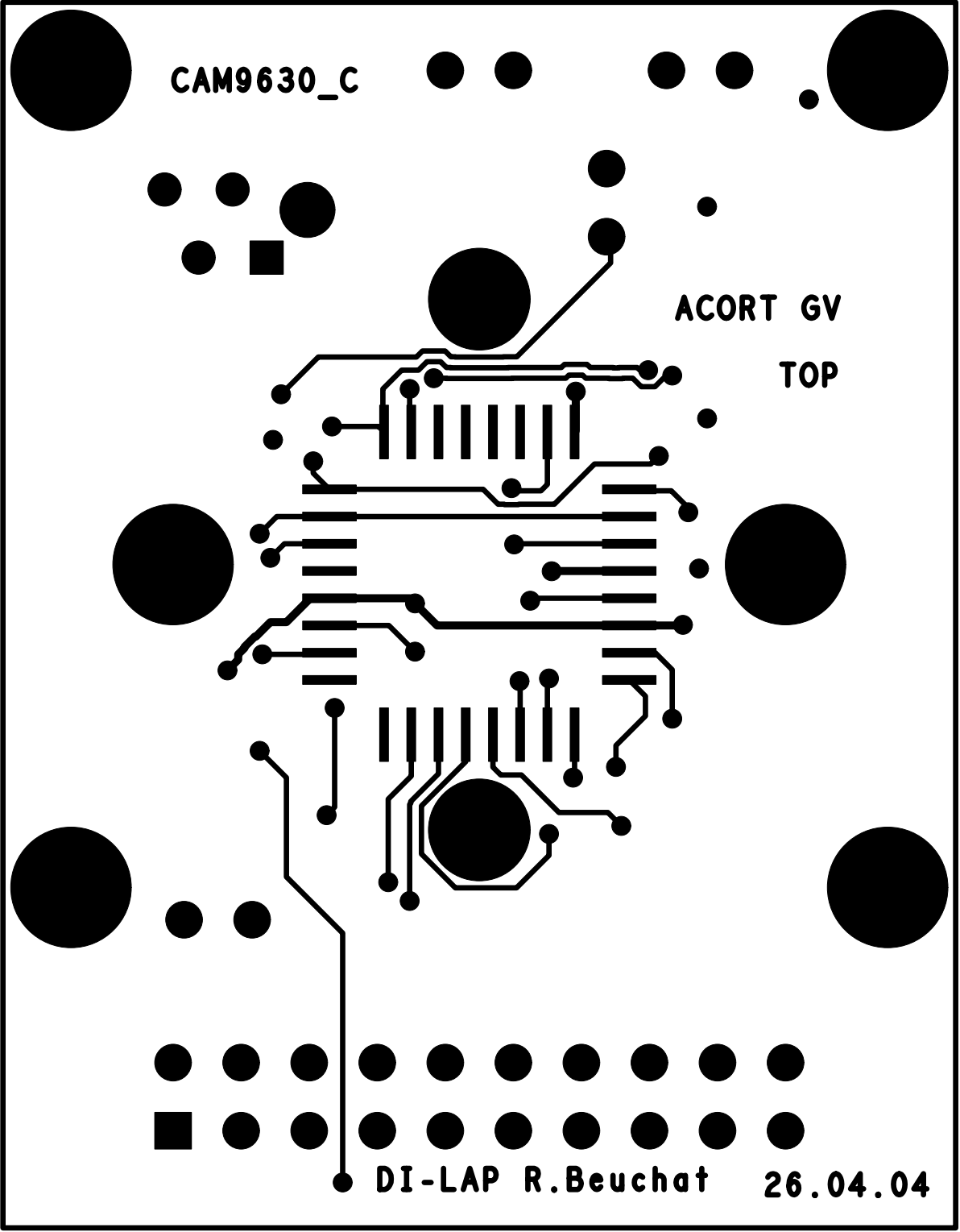
LABORATOIRE:DI-LAP  
ENGINEER:R.Beuchat

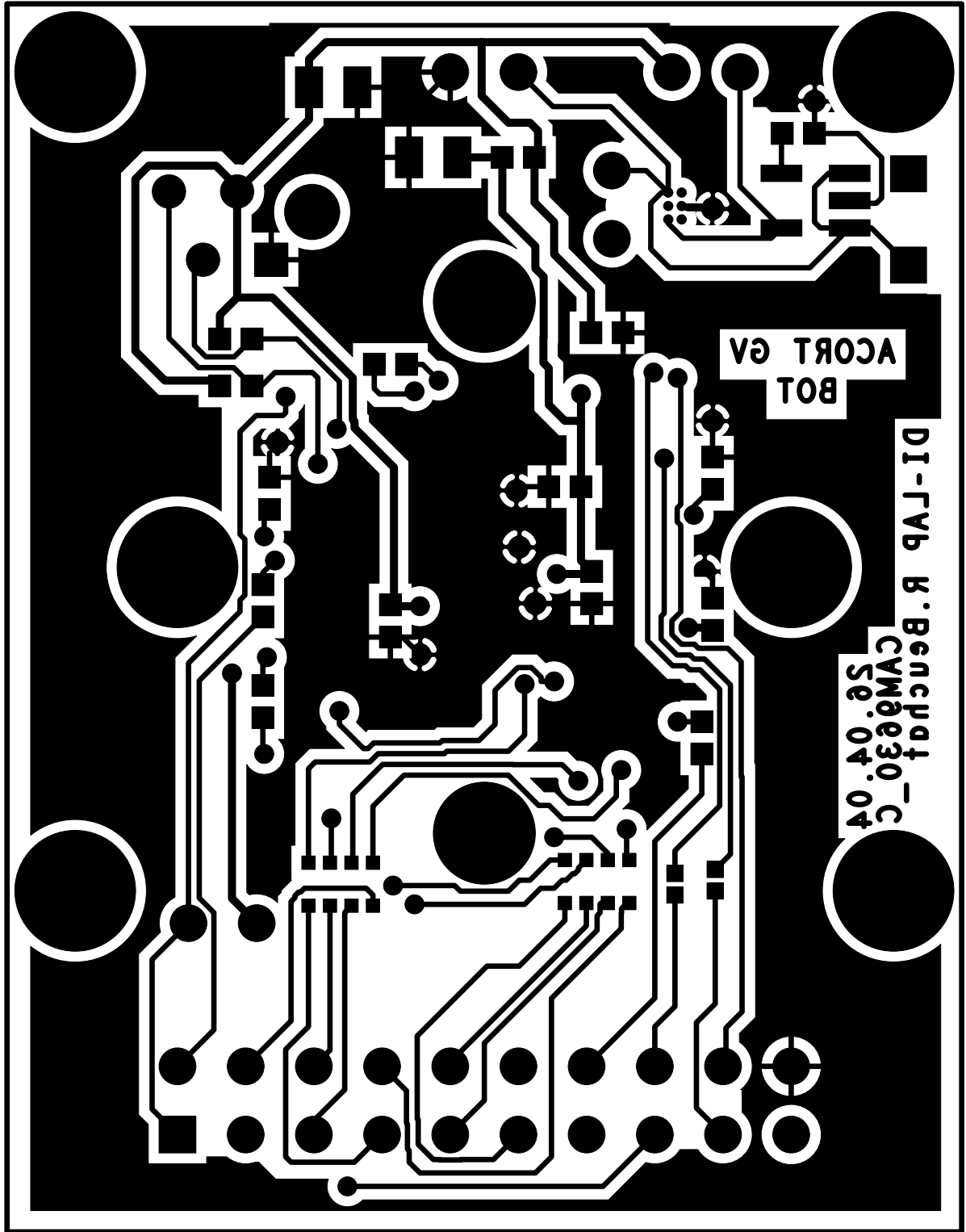
DATE:05.05.03  
EPFL-ACORT-GV







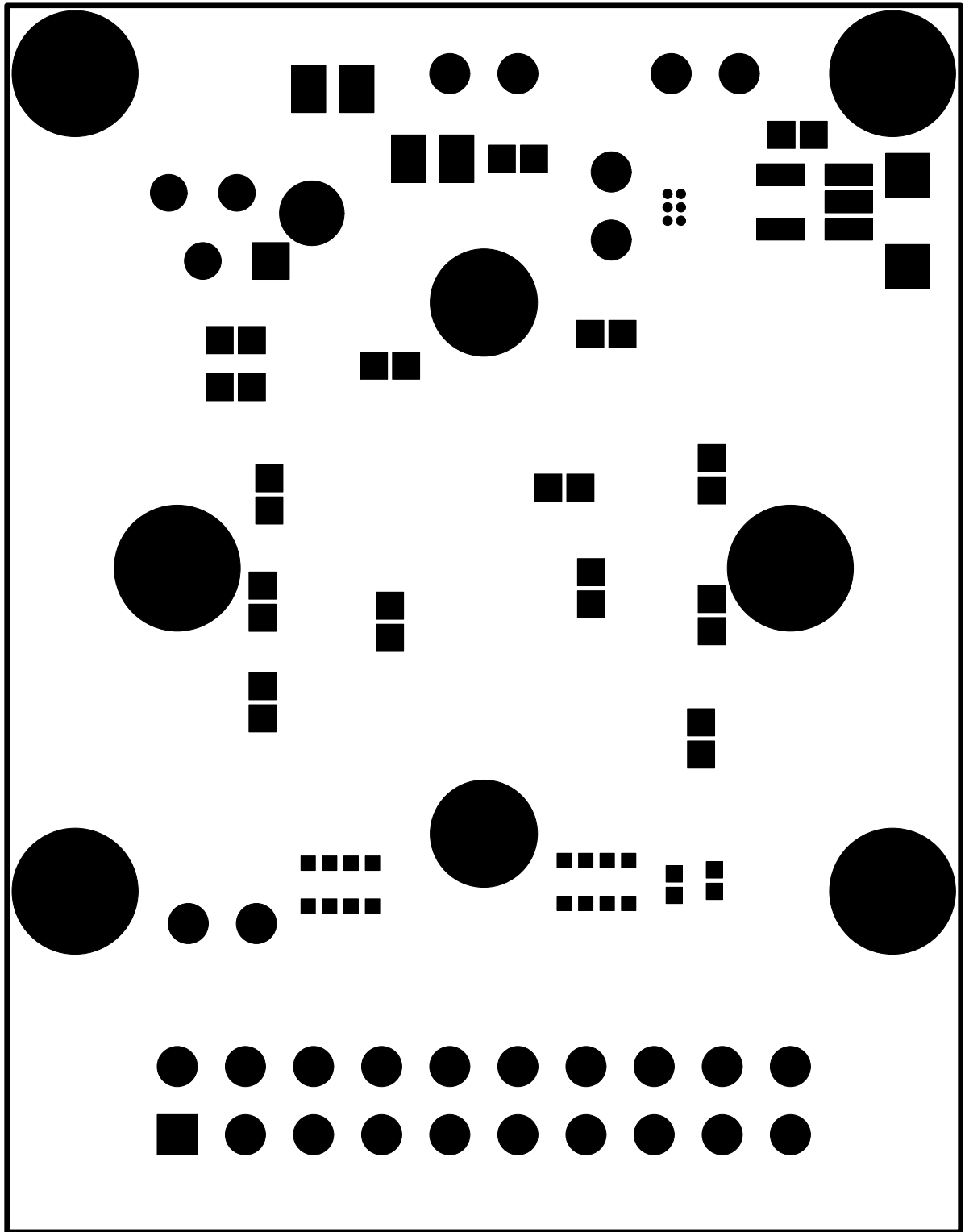




ACORT GA  
BOT

DI-LVB R. Benchpt - C

CAM9630\_C  
Se. 04. 04



# Component Report CAM9630\_C

cam9630\_gloss

Mon Apr 26 07:23:35 MET DST 2004

Ref Des	Device Type	Value	Package Type	x	y	ang	Mir	Remark
C1	0603	100N	0603_G	4.000	0.500	180.000	YES	
C2	0603	100N	0603_G	3.000	4.250	90.000	YES	
C3	0603	100N	0603_G	8.500	4.750	0.000	YES	
C4	0603	100N	0603_G	-8.000	4.000	0.000	YES	
C5	CP	1U	CP_1206	15.800	14.200	0.000	YES	
C6	0603	10N	0603_G	11.700	17.400	270.000	YES	
C8	0805	10U	0805_G	-5.630	19.120	270.000	YES	
C9	0603	100N	0603_G	4.570	9.980	270.000	YES	
C10	0805	10U	0805_G	-1.905	16.510	90.000	YES	
C16	0603	100N	0603_G	8.500	-0.500	0.000	YES	
C17	0603	100N	0603_G	-3.500	-0.750	180.000	YES	
J1	CO20		CPFDCI20	-11.430	-17.330	180.000	YES	
J3	CO4		MM4	-7.938	12.700	0.000	YES	
JAL	CO2		JUMP2	1.270	19.685	90.000	YES	
R1	R	0	0603_G	8.100	-5.100	180.000	YES	
R2	R	0	0603_G	-8.250	0.000	180.000	YES	
R3	R	0	0603_G	-8.250	-3.750	180.000	YES	
R5	R	0	0603_G	-3.500	8.800	270.000	YES	
R6	R	0	0603_G	1.270	16.510	270.000	YES	
R16	R	3.3K	0603_G	-9.250	9.750	270.000	YES	
R17	R	3.3K	0603_G	-9.250	8.000	270.000	YES	
RN1	RN	10	RN4_1206	-5.350	-10.550	270.000	YES	
RN2	RN	10	RN4_1206	4.200	-10.450	270.000	YES	
U1	LM9630BIEA		LCC32	0.000	0.500	180.000	NO	
U2	LM2931IBP		MICRO6	7.100	14.700	180.000	YES	
U2A	CO5_1A		SOT23_5	12.337	14.900	0.000	YES	
W1	JUMP2		JUMP2	9.525	19.685	90.000	YES	
W2	JUMP2		JUMP2	-11.020	-12.000	270.000	YES	
W3	JUMP2		JUMP2	4.750	13.480	0.000	NO	
W4	JUMP2		SOLDERJUMP	7.100	-10.550	180.000	YES	
W5	JUMP2		SOLDERJUMP	8.600	-10.400	180.000	YES	

Total Component count 31

# BOM Report CAM9630\_C

cam9630\_gloss

Mon Apr 26 07:23:35 MET DST 2004

Device	Package	Value	Nb	Reference Designators					Remark
0603-1-100N	0603_G	100N	7	C1 C16	C2 C17	C3	C4	C9	
0603-1-10N	0603_G	10N	1	C6					
0805-1-10U	0805_G	10U	2	C8	C10				
CO2-3	JUMP2		1	JAL					
CO20-17	CPFDCI20		1	J1					
CO4-14	MM4		1	J3					
CO5_1A	SOT23_5		1	U2A					
CP-16VSMD1UF-TAJ-1U	CP_1206	1U	1	C5					
JUMP2-0	JUMP2		3	W1	W2	W3			
JUMP2-3	SOLDERJUMP		2	W4	W5				
LM2931IBP-3.3	MICRO6		1	U2					
LM9630BIEA	LCC32		1	U1					
R-23-0	0603_G	0	5	R1	R2	R3	R5	R6	
R-23-3.3K	0603_G	3.3K	2	R16	R17				
RN-6-10	RN4_1206	10	2	RN1	RN2				

Total Component count 31

# NC Pins Report CAM9630\_C

cam9630\_gloss

Mon Apr 26 07:23:36 MET DST 2004

Ref Des	Device	Nb	Not Connected Pins							Remark
C5	CP-16VSMD1UF-TAJ-1U	1	1							
J1	CO20-17	4	3	12	13	19				
U1	LM9630BIEA	7	14	15	16	17	23	27	28	

Total count 12

# Power Pins Report CAM9630\_C

cam9630\_gloss

Mon Apr 26 07:23:36 MET DST 2004

Ref Des	Device	Name	Power Pins	Remark
U1	LM9630BIEA	GND	7 9 13 25	
		VCC	6 24	
		VCCA	8 12	
U2	LM2931IBP-3.3	GND	B2	

Total count 2



