

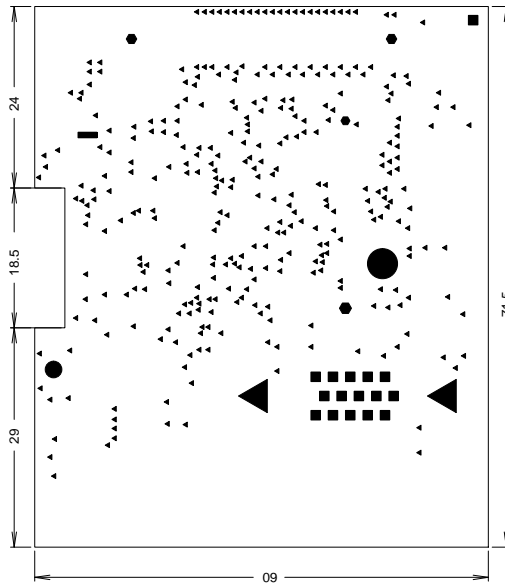
DRAWING: TEXTLCD	ENGINEER: JT/AGG
DATE: LAST_MODIFIED=Tue Mar 4 09:48:42 2008	PAGE:

# Signal Page Ref extlcd\_c

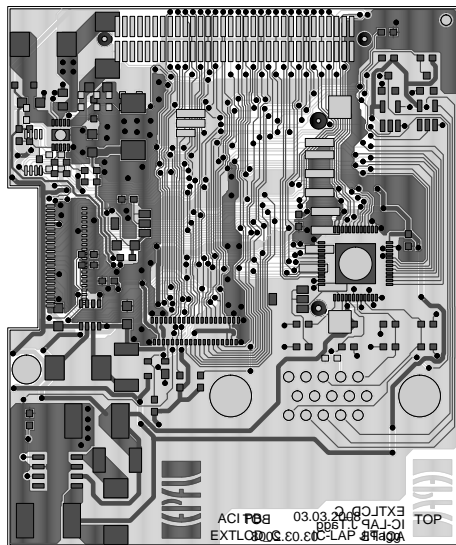
extlcd

Tue Mar 4 09:54:56 MET 2008

Ref Des	Pages	Ref Des	Pages
5V	1 1 2 2	VLED+	1 1 2
B<0>	1 1	VLED-	1 1 2
B<1>	1 1	XR	2 2
B<2>	1 1 1 2	YU	2 2
B<3>	1 1 1 2	Total Signals count 62	
B<4>	1 1 1 2		
B<5>	1 1 1 2		
B<6>	1 1 1 2		
B<7>	1 1 1 2		
Blue	1 1		
CLK	1 1		
G<0>	1 1		
G<1>	1 1		
G<2>	1 1 1 2		
G<3>	1 1 1 2		
G<4>	1 1 1 2		
G<5>	1 1 1 2		
G<6>	1 1 1 2		
G<7>	1 1 1 2		
Green	1 1		
LCD_CS*	1 1		
LCD_DOTCLK	1 1 2		
LCD_HSYNC	1 1 2		
LCD_ON	1 2		
LCD_RESET*	1 1		
LCD_TS_SCL	1 1 2		
LCD_TS_SDI	1 1 2		
LCD_TS_SDO	1 1 2		
LCD_VSYNC	1 1 2		
LED_ON	1 1		
MMC_CD	1 2		
MMC_CLK	1 2		
MMC_CMD	1 2		
MMC_DAT<0>	1 2		
MMC_DAT<1>	1 2		
MMC_DAT<2>	1 2		
MMC_DAT<3>	1 2		
MMC_WP	1 2		
MOUT	2		
R<0>	1 1		
R<1>	1 1		
R<2>	1 1 1 2		
R<3>	1 1 1 2		
R<4>	1 1 1 2		
R<5>	1 1 1 2		
R<6>	1 1 1 2		
R<7>	1 1 1 2		
Red	1 1		
RESET*	1 1		
STEPUP_ON	1 1		
TS_CS*	1 2		
VCOM	2		
VGA_HSYNC*	1 1		
VGA_SCL	1 1		
VGA_SDA	1 1		
VGA_VSYNC*	1 1		
VGH	2 2		
VGL	2 2		



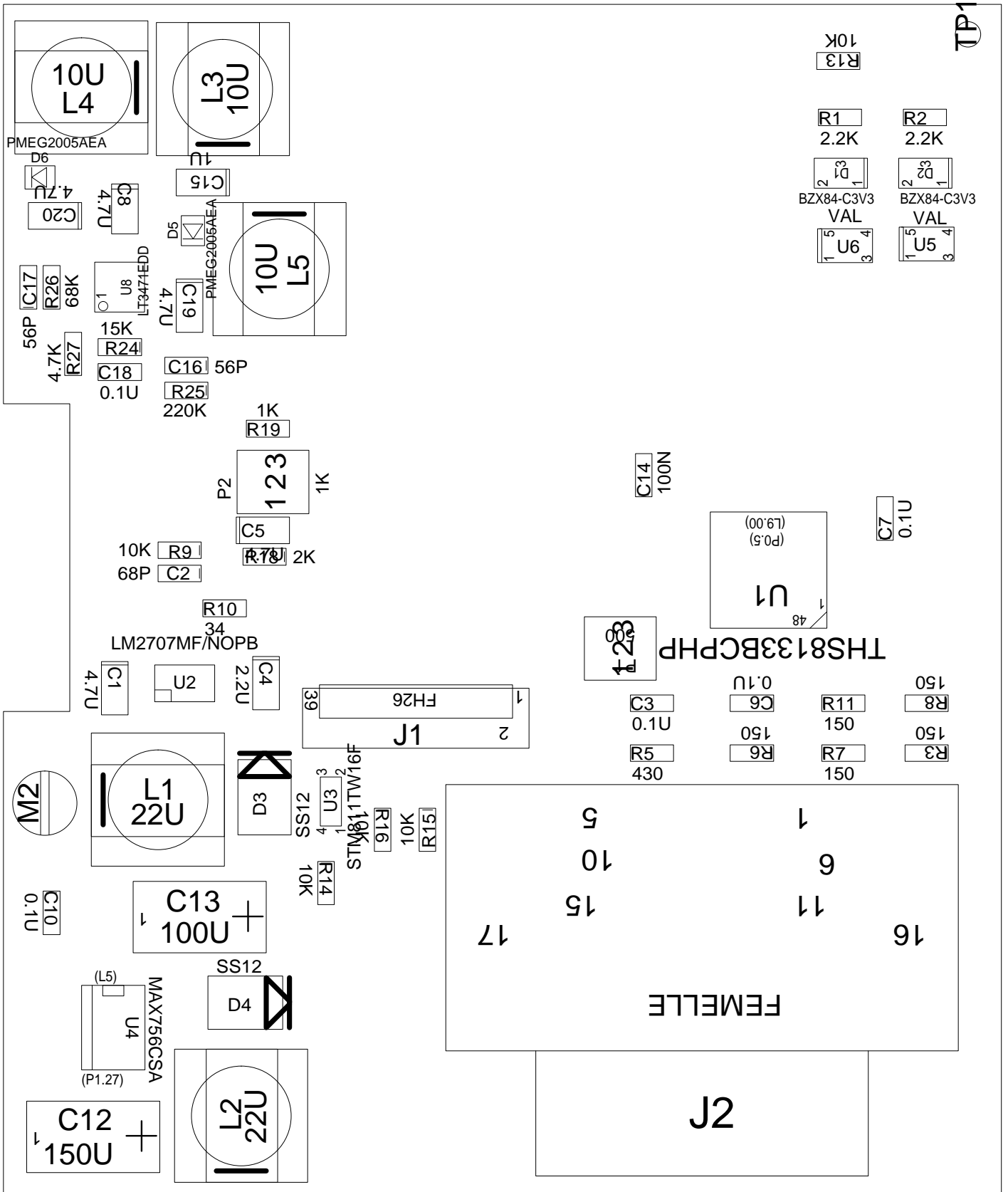
DRILL CHART			
FIGURE	SIZE	PLATED	QTY
.	0.203	PLATED	326
■	0.889	PLATED	16
■	1.1	PLATED	1
●	2.2	PLATED	1
▲	3.2	PLATED	2
●	4.0	PLATED	1
●	1.2	NOT PLATED	1
●	1.4	NOT PLATED	2
●	1.6	NOT PLATED	1

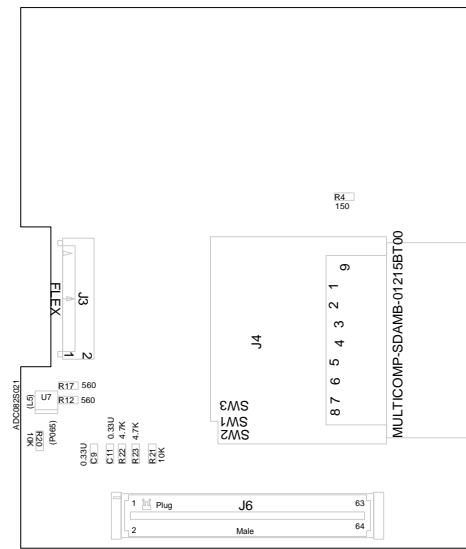


TITRE:EXTLCD\_C

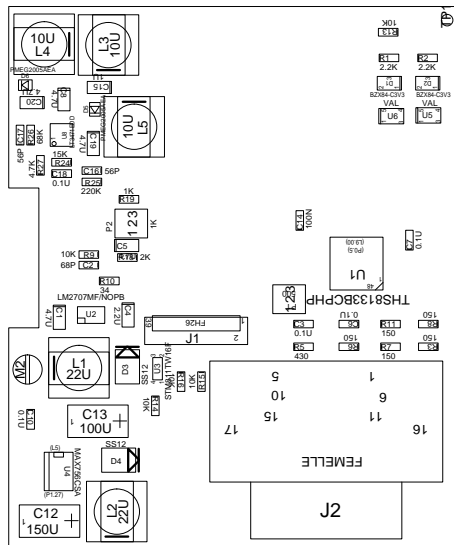
LABORATOIRE:IC-LAP  
ENGINEER:J.Tagg

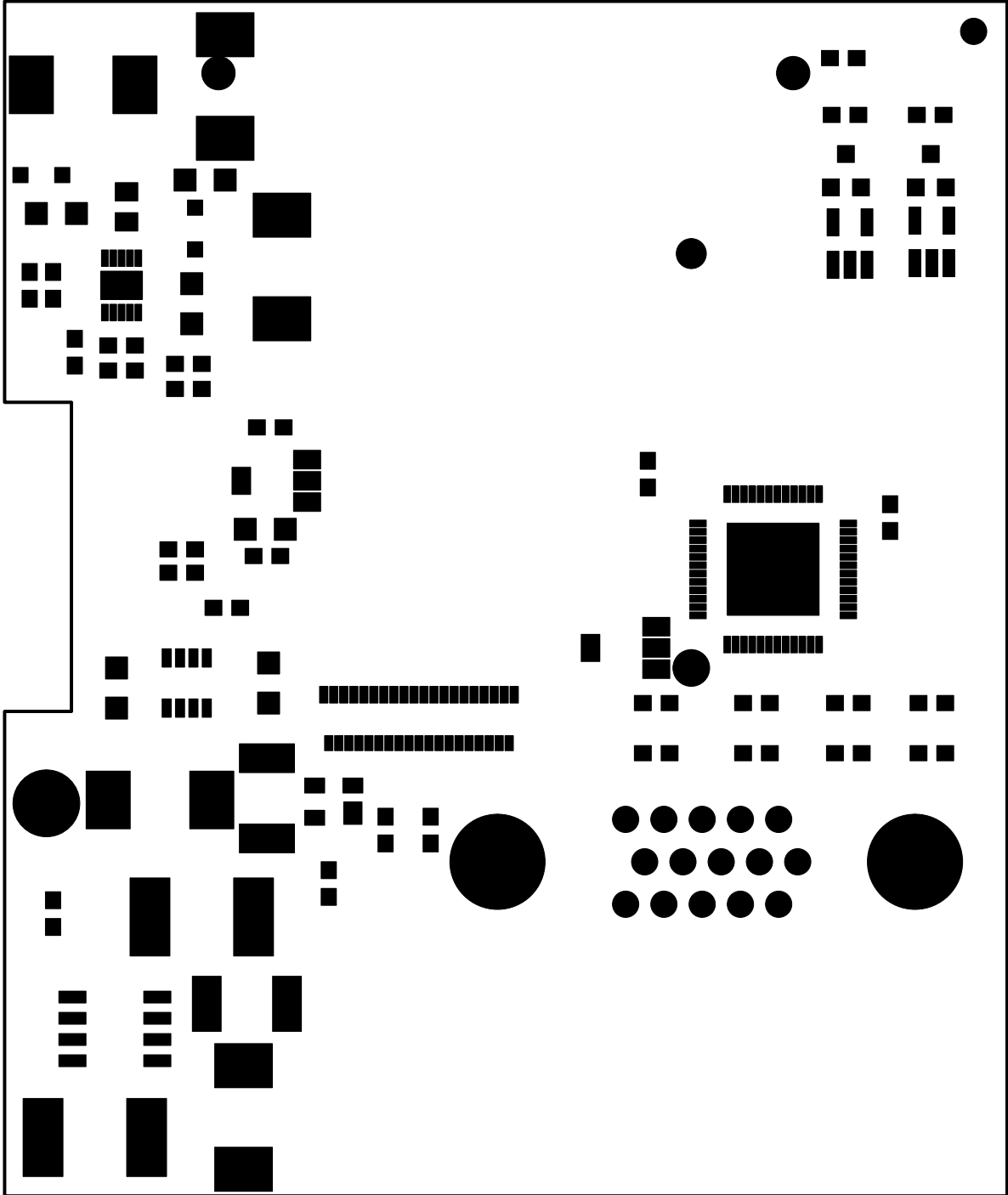
DATE:7.5.2007  
EPFL-ACORT-PB

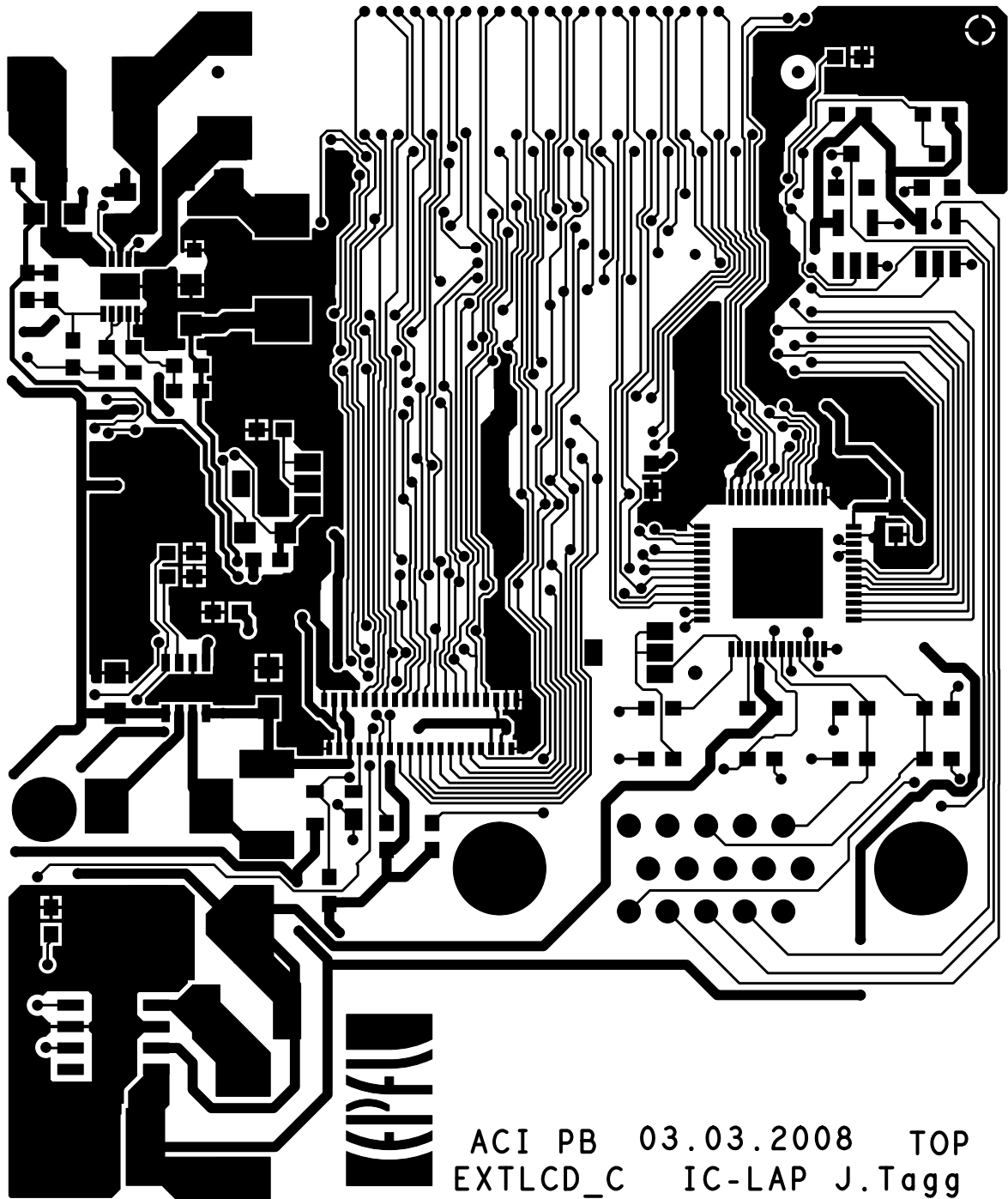




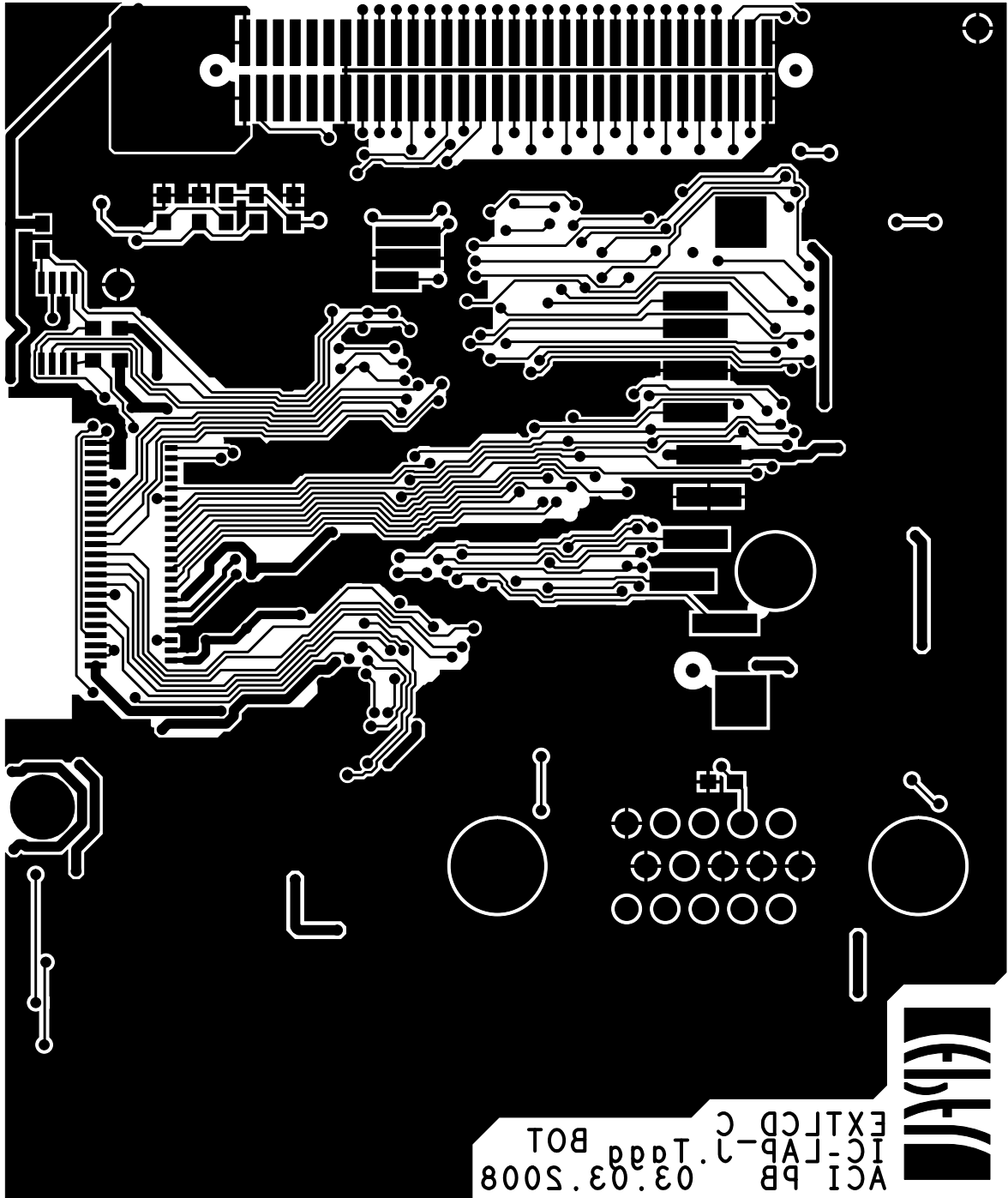


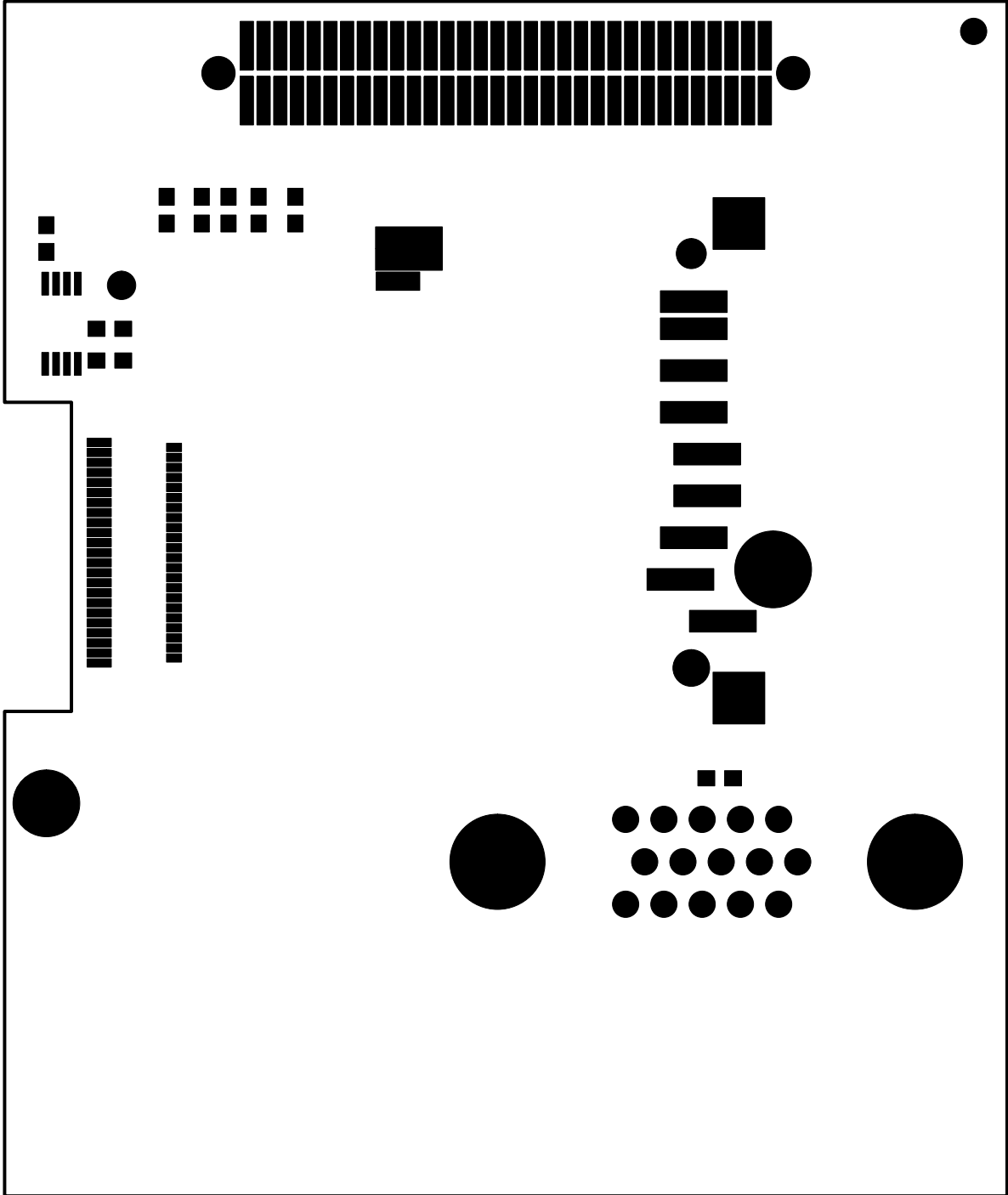


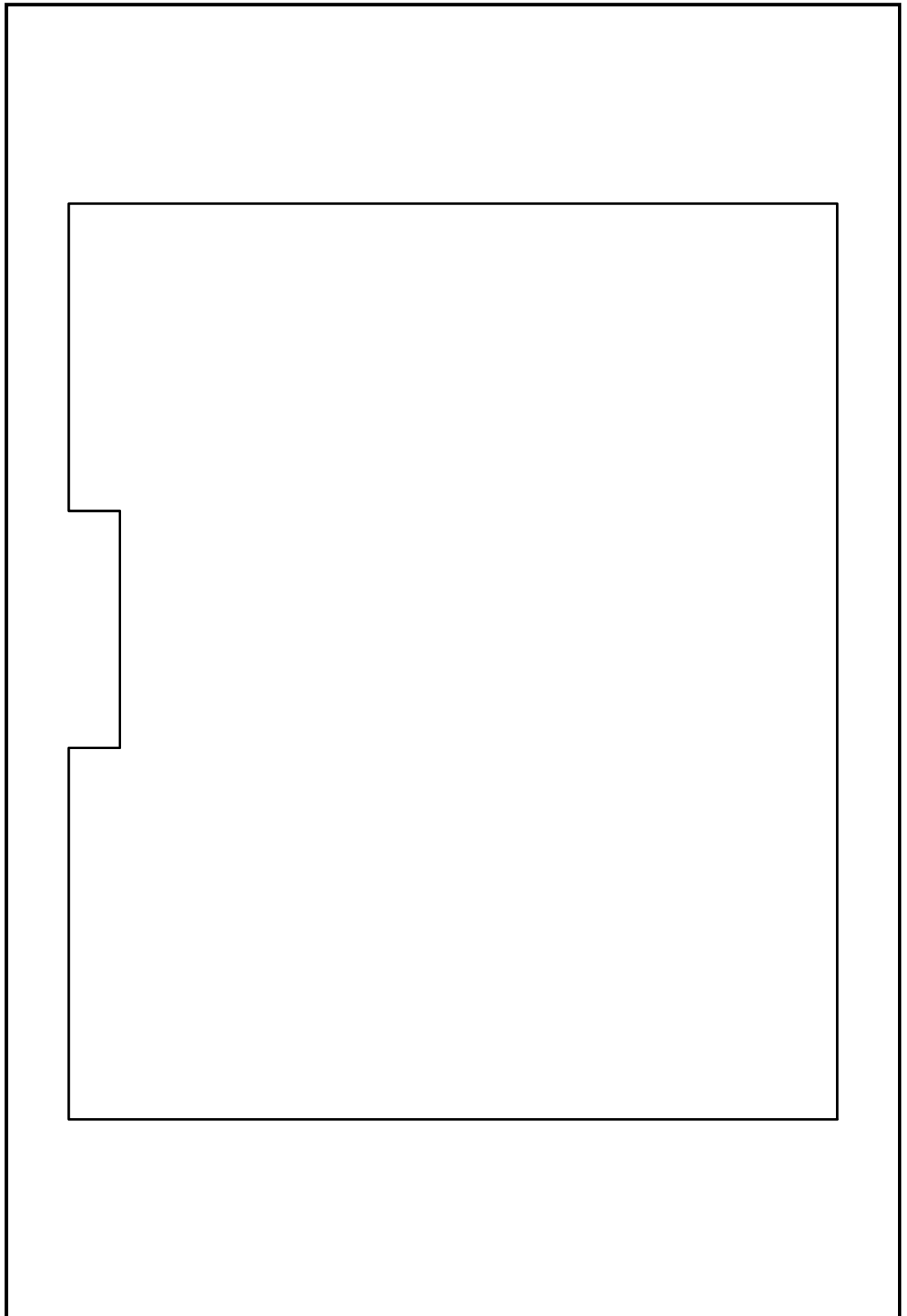




ACI PB 03.03.2008 TOP  
EXTLCD\_C IC-LAP J.Tagg







# Component Report EXTLCD\_C

extlcd\_c\_gloss

Tue Mar 4 09:54:57 MET 2008

Ref Des	Device Type	Value	Package Type	x	y	ang	Mir	Remark
C1	0805	4.7U	0805	30.400	53.300	270.000	NO	
C2	0603	68P	0603	37.300	49.400	180.000	NO	
C3	0603	0.1U	0603	29.500	21.000	0.000	NO	
C4	0805	2.2U	0805	30.700	44.200	270.000	NO	
C5	0805	4.7U	0805	39.900	44.400	0.000	NO	
C6	0603	0.1U	0603	29.500	15.000	180.000	NO	
C7	0603	0.1U	0603	40.600	7.000	90.000	NO	
C8	0805	4.7U	0805_G	59.200	52.700	270.000	NO	
C9	0603	0.33U	0603	59.000	50.300	270.000	YES	
C10	0603	0.1U	0603	16.900	57.100	270.000	NO	
C11	0603	0.33U	0603	59.000	48.200	270.000	YES	
C12	CP	150U	CP_2917	3.500	54.600	0.000	NO	
C13	CP	100U	CP_2917	16.700	48.200	0.000	NO	
C14	0603	100N	0603	43.200	21.500	90.000	NO	
C15	0805	1U	0805	60.800	48.000	180.000	NO	
C16	0603	56P	0603	49.800	49.000	180.000	NO	
C17	0603	56P	0603	54.500	58.500	90.000	NO	
C18	0603	0.1U	0603	49.400	53.000	0.000	NO	
C19	0805	4.7U	0805	53.400	48.800	270.000	NO	
C20	0805	4.7U	0805	58.800	56.900	180.000	NO	
D1	BZX84	BZX84-C3V3	SOT23	61.360	9.645	0.000	NO	
D2	BZX84	BZX84-C3V3	SOT23	61.360	4.565	0.000	NO	
D3	SS12	SS12	1812_D	23.800	44.300	270.000	NO	
D4	SS12	SS12	1812_D	11.500	45.500	180.000	NO	
D5	PMEG2005AEA	PMEG2005AEA	SOD323	57.900	48.600	90.000	NO	
D6	PMEG2005AEA	PMEG2005AEA	SOD323	61.100	57.800	0.000	NO	
J1	CO39		FH26_39	30.400	35.200	90.000	NO	
J2	CO15		15PFCI_3	20.000	18.000	90.000	NO	
J3	CO45		FH23_45_REVERSE	38.500	52.100	180.000	YES	
J4	MULTICOMP		SD_CARD	44.000	11.600	0.000	YES	
J6	CO64		MO64MSMD_1MM	67.200	30.000	90.000	YES	
L1	L	22U	DR73	23.700	50.700	0.000	NO	
L2	L	22U	DR73	4.700	45.700	90.000	NO	
L3	L	10U	DR73	66.400	46.800	90.000	NO	
L4	L	10U	DR73	66.500	55.300	180.000	NO	
L5	L	10U	DR73	55.600	43.400	270.000	NO	
P1	P	500	SMDPOT_4MM_2	32.800	22.900	0.000	NO	
P2	P	1K	SMDPOT_4MM_2	42.800	43.800	0.000	NO	
R1	R	2.2K	0603	64.700	9.700	0.000	NO	
R2	R	2.2K	0603	64.700	4.600	0.000	NO	
R3	R	150	0603	26.500	4.500	180.000	NO	
R4	R	150	0603	25.000	17.200	0.000	YES	
R5	R	430	0603	26.500	21.000	0.000	NO	
R6	R	150	0603	26.500	15.000	180.000	NO	
R7	R	150	0603	26.500	9.500	0.000	NO	
R8	R	150	0603	29.500	4.500	180.000	NO	
R9	R	10K	0603	38.700	49.400	180.000	NO	
R10	R	34	0603	35.200	46.700	0.000	NO	
R11	R	150	0603	29.500	9.500	0.000	NO	
R12	R	560	0603	51.900	53.700	0.000	YES	
R13	R	10K	0603	68.100	9.800	180.000	NO	
R14	R	10K	0603	18.700	40.600	270.000	NO	
R15	R	10K	0603	21.900	34.500	270.000	NO	
R16	R	10K	0603	21.900	37.200	270.000	NO	
R17	R	560	0603	50.000	53.700	0.000	YES	
R18	R	2K	0603	38.300	44.300	180.000	NO	
R19	R	1K	0603	46.000	44.100	0.000	NO	
R20	R	10K	0603	57.300	57.500	90.000	YES	

# Component Report EXTLCD\_C

extlcd\_c\_gloss

Tue Mar 4 09:54:57 MET 2008

Ref Des	Device Type	Value	Package Type	x	y	ang	Mir	Remark
R21	R	10K	0603	59.000	42.600	270.000	YES	
R22	R	4.7K	0603	59.000	46.600	270.000	YES	
R23	R	4.7K	0603	59.000	44.800	270.000	YES	
R24	R	15K	0603	50.900	53.000	180.000	NO	
R25	R	220K	0603	48.300	49.000	180.000	NO	
R26	R	68K	0603	54.500	57.100	90.000	NO	
R27	R	4.7K	0603	50.500	55.800	90.000	NO	
TP1	TP		TP5435	69.700	2.000	0.000	NO	
U1	THS8133BCPHP		LQFP48_GND	37.500	14.000	90.000	NO	
U2	LM2707MF/NOPB		SOT23_8_08MM	30.700	49.100	270.000	NO	
U3	STM811TW16F		SOT143	23.600	40.300	0.000	NO	
U4	MAX756CSA		SO8	10.000	53.400	270.000	NO	
U5	NC7S04		SOT23_5	57.100	4.500	0.000	NO	
U6	NC7S04		SOT23_5	57.000	9.400	0.000	NO	
U7	ADC082S021		MSO8	52.200	56.600	0.000	YES	
U8	LT3471EDD		TDFN3X3_11	54.500	53.000	0.000	NO	

Total Component count 74



# BOM Report EXTLCD\_C

extlcd\_c\_gloss

Tue Mar 4 09:54:58 MET 2008

Device	Package	Value	Nb	Reference Designators					Remark
0603-0.1U	0603	0.1U	5	C3	C6	C7	C10	C18	
0603-0.33U	0603	0.33U	2	C9	C11				
0603-100N	0603	100N	1	C14					
0603-56P	0603	56P	2	C16	C17				
0603-68P	0603	68P	1	C2					
0805-1-4.7U	0805_G	4.7U	1	C8					
0805-1U	0805	1U	1	C15					
0805-2.2U	0805	2.2U	1	C4					
0805-4.7U	0805	4.7U	4	C1	C5	C19	C20		
ADC082S021	MSO8		1	U7					
BZX84-C3V3-BZX84-C3V	SOT23	BZX84-C3V3	2	D1	D2				
CO15-2	15PFCI_3		1	J2					
CO39-FH26_39	FH26_39		1	J1					
CO45-FH23_45-1	FH23_45_REVERSE		1	J3					
CO64-MO64MSMD_1MM	MO64MSMD_1MM		1	J6					
CP-10V-SMD-100UR065-	CP_2917	100U	1	C13					
CP-10V-SMD-150UR050-	CP_2917	150U	1	C12					
L-DR73-10U	DR73	10U	3	L3	L4	L5			
L-DR73-22U	DR73	22U	2	L1	L2				
LM2707MF/NOPB	SOT23_8_08MM		1	U2					
LT3471EDD	TDFN3X3_11		1	U8					
MAX756CSA	SO8		1	U4					
MULTICOMP-SDAMB-0121	SD_CARD		1	J4					
NC7S04-1	SOT23_5		2	U5	U6				
P-SMDPOT_4MM_2-1K	SMDPOT_4MM_2	1K	1	P2					
P-SMDPOT_4MM_2-500	SMDPOT_4MM_2	500	1	P1					
PMEG2005AEA	SOD323	PMEG2005AEA2	2	D5	D6				
R-0603-10K	0603	10K	7	R9	R13	R14	R15	R16	
				R20	R21				
R-0603-150	0603	150	6	R3	R4	R6	R7	R8	
				R11					
R-0603-15K	0603	15K	1	R24					
R-0603-1K	0603	1K	1	R19					
R-0603-2.2K	0603	2.2K	2	R1	R2				
R-0603-220K	0603	220K	1	R25					
R-0603-2K	0603	2K	1	R18					
R-0603-34	0603	34	1	R10					
R-0603-4.7K	0603	4.7K	3	R22	R23	R27			
R-0603-430	0603	430	1	R5					
R-0603-560	0603	560	2	R12	R17				
R-0603-68K	0603	68K	1	R26					
SS12-OBS	1812_D	SS12	2	D3	D4				
STM811TW16F	SOT143		1	U3					
THS8133BCPHP	LQFP48_GND		1	U1					
TP-2	TP5435		1	TP1					

Total Component count 74

# NC Pins Report EXTLCD\_C

extlcd\_c\_gloss

Tue Mar 4 09:54:58 MET 2008

Ref Des	Device	Nb	Not Connected Pins										Remark
J2	CO15-2	3	4	9	11								
J3	CO45-FH23_45-1	5	6	7	8	11	35						
J6	CO64-MO64MSMD_1MM	9	4	5	6	7	8	9	10	11	12		
U1	THS8133BCPHP	1	49										
U4	MAX756CSA	1	4										

Total count 19

# Power Pins Report EXTLCD\_C

extlcd\_c\_gloss

Tue Mar 4 09:54:59 MET 2008

Ref Des	Device	Name	Power Pins	Remark
D1	BZX84-C3V3-BZX84-C3V	GND	2	
D2	BZX84-C3V3-BZX84-C3V	GND	2	
D4	SS12-OBS	5V	1	
D5	PMEG2005AEA	GND	1	
J1	CO39-FH26_39	GND	1 2 3 33 38 39	
		VCC	4 5 6	
J2	CO15-2	GND	5 6 7 8 10	
J3	CO45-FH23_45-1	5V	32	
		GND	1 3 5 12 31 38 41 42 43	
		VCC	9	
J4	MULTICOMP-SDAMB-0121	GND	3 6 SW1	
		VCC	4	
J6	CO64-MO64MSMD_1MM	GND	13 14 63 64	
		VCC	1 2	
TP1	TP-2	GND	1	
U1	THS8133BCPHP	5V	40 44	
		GND	9 10 11 13 14 25 35 36 42 46	
		VCC	47 48	
U2	LM2707MF/NOPB	GND	6	
		VCC	1	
U3	STM811TW16F	GND	1	
		VCC	4	
U4	MAX756CSA	5V	6	
		GND	2 7	
		VCC	5	
U5	NC7S04-1	GND	3	
		VCC	5	
U6	NC7S04-1	GND	3	
		VCC	5	
U7	ADC082S021	GND	3	
		VCC	2	
U8	LT3471EDD	GND	5 11	
		VCC	8	

Total count 18

